



**CULTIVATING POSSIBILITIES THROUGH ENGINEERING**

*an NMSDC Certified MBE Firm*

Championing

**customer-centric solutions**

that help people, businesses, and communities flourish

Windward Engineers & Consultants is a Native American-owned, MBE-certified, multi-disciplinary engineering and consulting firm. We provide mechanical, electrical, plumbing engineering design services, and offer specialties in fire protection/life safety, sustainability consulting and assessment, lighting design, and program management services.

Our skilled team of problem solvers and professionals strive to make the places where people live, work, play, shop, learn, heal, and serve - function better.



**BOLD** SOLUTIONS  
**BOLD** DESIGNS

**68+ YEARS** of  
ENGINEERING EXCELLENCE

LICENSED IN ALL  
**50 STATES\***

**MBE**  
CERTIFIED



**NATIONAL**  
Minority Supplier  
Development Council



**PARTNERSHIP WITH  
THE SHAKOPEE  
MDEWAKANTON  
SIOUX COMMUNITY**

\*THROUGH WINDWARD AND LOCALLY LICENSED AFFILIATES



# THE FULL POTENTIAL

## OF THE BUILT ENVIRONMENT

Using a highly collaborative approach and a focus on technical excellence, we make it our goal to understand our clients' objectives and create solutions that specifically serve them and their spaces. From Fortune 500 companies to academic institutions and everything in between, we believe excellence in engineering can only be achieved by being a productive partner to the entire real estate, design, and construction team.

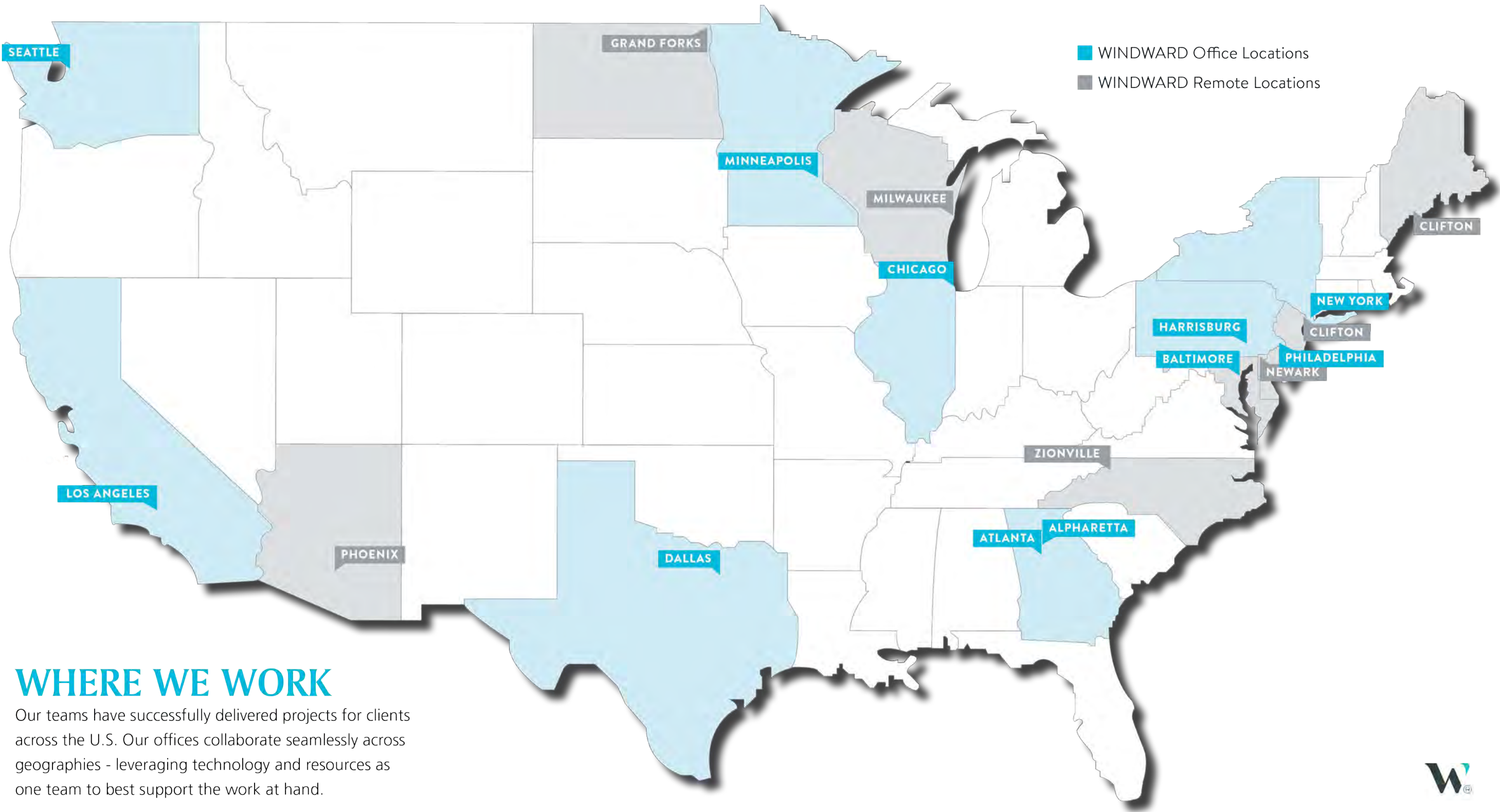
### MARKETS

Corporate  
Education  
Health+Life Sciences  
Lifestyle  
Mixed-Use  
Native American Communities  
Public Sector Institutions  
Tech+Logistics

### SERVICES

Mechanical  
Electrical  
Plumbing  
Fire Protection  
Life Safety  
Lighting Design  
Energy+Sustainability  
Program Management





# WHERE WE WORK

Our teams have successfully delivered projects for clients across the U.S. Our offices collaborate seamlessly across geographies - leveraging technology and resources as one team to best support the work at hand.



# MEP 2040

## COMMITTED SIGNATORY

Windward is the first Native-American minority-owned firm to be a proud signatory of Carbon Leadership Forum's MEP2040 Challenge. The decisions we make concerning refrigerants, materials, system types, and equipment sizing have a profound impact on both embodied and operational carbon emissions.

The MEP 2040 Challenge is designed to ignite building designers, owners, and manufacturers to meet embodied carbon benchmarks and ambitious reduction goals and be recognized for the significant role they can play towards these targets.

As a committed signatory, Windward will advocate for greater transparency of materials in equipment, low global warming potential refrigerants and incorporation of low-carbon solutions in the built environment. With this pledge, we commit to reducing the operational and embodied carbon across MEP systems on all our projects, targeting zero by 2040.

The logo for the MEP 2040 Challenge is presented on a white, torn-edge paper graphic that is layered over a background image of a city skyline with mountains in the distance. The word "MEP" is written in large, bold, blue capital letters. Below it, the year "2040" is written in large, bold, yellow capital letters. At the bottom of the paper graphic, the phrase "Committing to Zero" is written in a smaller, grey, sans-serif font. A yellow brushstroke is visible at the bottom edge of the paper graphic.

MEP

2040

Committing to Zero

# BUILDING PERFORMANCE

At Windward, we believe the actions we take today on behalf of our clients and staff have a generational impact. Our sustainable engineering practices offer multiple benefits: healthy environments, resilient systems, and reduced operating costs. Predicting and measuring energy use is a core part of our work - what you can measure, you can change. We strive to design flexible systems that can adapt to future conditions, whether alterations to building use, energy cost volatility, or the challenges of a changing climate.

Our services include:

## BUILDING CONDITION ASSESSMENT

- Age + Useful Life of Existing Equipment
- Control Systems Evaluation
- Building, Energy, Lighting + Life Safety Code Compliance

## BUILDING ENERGY USAGE

- Current Energy + Water Usage Evaluation
- Benchmark Facility Energy Use -vs- Similar Buildings in the Same Climate Zone
- Life Cycle Cost Evaluation -vs- Benefit for Envelope or Equipment Improvements
- Carbon Reduction Study

## INDOOR ENVIRONMENT ASSESSMENT

- Building Air Quality Evaluation
- Indoor Lighting
- Day Lighting Study / Sun Shading Study
- Meet Corporate ESG Goals in the Built Environment



SMSC NET ZERO PATHWAY ENERGY AUDIT (19 BLDGS)  
MYSTIC LAKE HOTEL + CASINO



PENNSYLVANIA EMERGENCY MANAGEMENT AGENCY  
LEED GOLD CERTIFIED



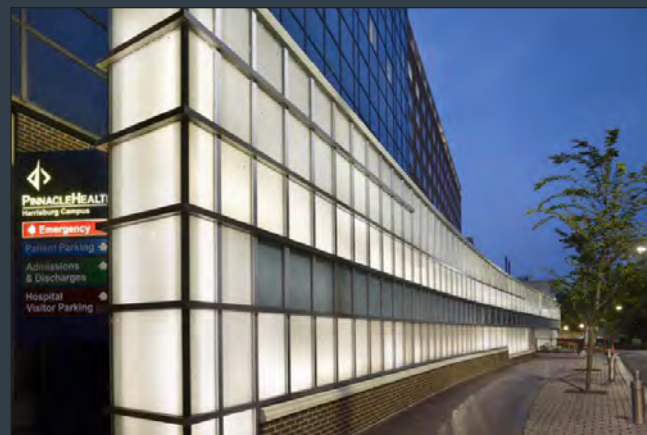
FAIRFAX COUNTY  
ELECTRIC VEHICLE CHARGING STATIONS

# INDUSTRY EXPERIENCE

LEVERAGING CROSS-FUNCTIONAL THINKING



**CORPORATE**



**HEALTHCARE + LIFE SCIENCES**



**MIXED-USE**



**PUBLIC SECTOR INSTITUTIONS**



**EDUCATION**



**LIFESTYLE**



**NATIVE AMERICAN COMMUNITIES**



**TECH + LOGISTICS**

# A SELECTION OF OUR **PROJECTS**

*We believe in partnerships built on a foundation of common goals and an energetic pursuit of results.*





## WINDWARD ENGINEERS & CONSULTANTS

HARRISBURG, PA

---

**6,500** SQUARE FEET

---

MECHANICAL, ELECTRICAL,  
PLUMBING, FIRE PROTECTION,  
LIGHTING DESIGN



# ANAPOL WEISS CORPORATE OFFICES

PHILADELPHIA, PA

18,202 SQUARE FEET

MECHANICAL, ELECTRICAL,  
PLUMBING, FIRE PROTECTION,  
LIGHTING DESIGN



## RADIAN CORPORATE HEADQUARTERS

PHILADELPHIA, PA

---

150,000 SQUARE FEET

---

LIGHTING DESIGN



## TD BANK NATIONAL PORTFOLIO

VARIOUS LOCATIONS, U.S.

**3.8M** SQUARE FEET OF ENGINEERED  
SPACE

MECHANICAL, ELECTRICAL,  
PLUMBING, FIRE PROTECTION,  
LIGHTING DESIGN,  
TELECOMMUNICATIONS



## **GAF CORPORATE HEADQUARTERS**

PARSIPPANY, NJ

---

**375,000** SQUARE FEET

---

MECHANICAL, ELECTRICAL,  
PLUMBING, FIRE PROTECTION

---

**LEED CERTIFIED**



## THE ARCHER GROUP

WILMINGTON, DE

28,000 SQUARE FEET

MECHANICAL, ELECTRICAL,  
PLUMBING, FIRE PROTECTION,  
LIGHTING DESIGN



## THE BENEDUM TREES BUILDING

PITTSBURGH, PA

---

**9,000** SQUARE FEET

---

MECHANICAL, ELECTRICAL,  
PLUMBING, FIRE PROTECTION,  
LIGHTING DESIGN



**COMERICA BANK  
HEADQUARTERS**  
DALLAS, TX

---

**190,000** SQUARE FEET

---

MECHANICAL, ELECTRICAL,  
PLUMBING, FIRE PROTECTION





## INDUSTRIOUS ON-CALL

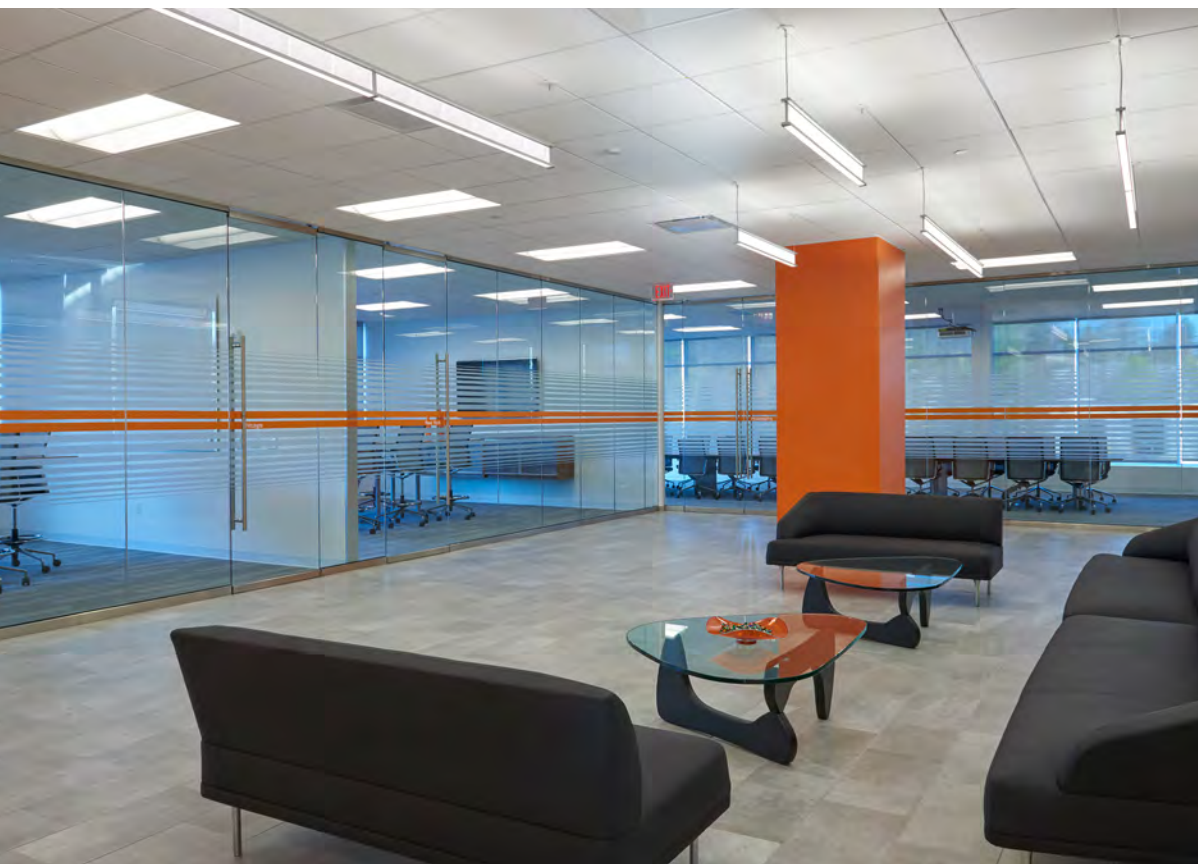
VARIOUS LOCATIONS, U.S.

---

**30,000-50,000** SQUARE FEET  
25,550 SF - SAN DIEGO, CA  
32,898 SF - SCOTTSDALE, AZ  
31,554 SF - KANSAS CITY, MI  
LIGHTING DESIGN - FAIRFAX, VA

---

MECHANICAL, ELECTRICAL,  
PLUMBING, FIRE PROTECTION,  
SPECIALTY LIGHTING



## IFM EFECTOR CORPORATE HEADQUARTERS

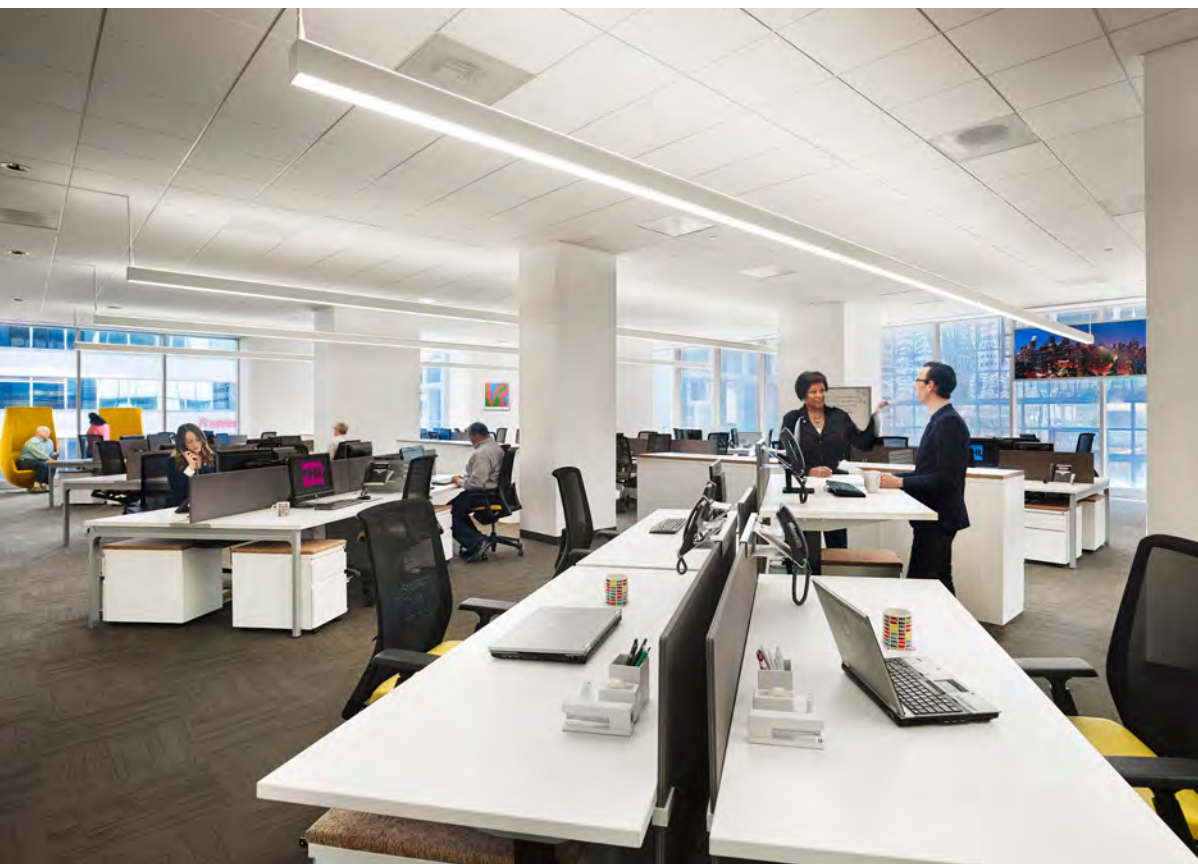
MALVERN, PA

---

**50,000** SQUARE FEET

---

MECHANICAL, ELECTRICAL,  
PLUMBING, FIRE PROTECTION,  
LIGHTING DESIGN



## PHILADELPHIA CONVENTION & VISITORS BUREAU

PHILADELPHIA, PA

---

12,000 SQUARE FEET

---

MECHANICAL, ELECTRICAL,  
PLUMBING, LIGHTING



## **DUANE MORRIS LAW FIRM**

MULTIPLE LOCATIONS, U.S.

---

SQUARE FOOTAGES VARIED

---

MECHANICAL, ELECTRICAL,  
PLUMBING, FIRE PROTECTION



## **GFI WAREHOUSE / OFFICE BUILDING RENOVATION**

POMPANO, FL

---

GOURMET FOODS INTERNATIONAL

---

75,056 SF WAREHOUSE  
9,500 SF COOLER  
10,000 SF FREEZER  
500 SF OFFICE

---

MECHANICAL, ELECTRICAL, PLUMBING,  
FIRE PROTECTION



## VEHICLE SERVICE CENTERS

MULTIPLE LOCATIONS, U.S.

---

CONFIDENTIAL E-COMMERCE  
CLIENT

---

MECHANICAL, ELECTRICAL,  
PLUMBING, FIRE PROTECTION

---

Addition of vehicle service centers to existing warehouse sites. Centers are interior (building modifications) or exterior (new construction), each approximately 4,500 SF.

---

Anaheim, CA  
Bensalem, PA  
Camarillo, CA  
Duluth, GA  
Hillsboro, OR  
Lakeland, FL  
Miami, FL  
Newark, CA  
Philadelphia, PA  
Seffner, FL  
Township, NJ

Aurora, CO  
Brooklyn Park, MN  
Deerfield Beach, FL  
Fort Lauderdale, FL  
Kenosha, WI  
Land O'Lakes, FL  
Melbourne, FL  
North Salt Lake, UT  
San Bernardino, CA  
Toledo, OH



## WAREHOUSE PROJECTS

MULTIPLE LOCATIONS, U.S.

---

CONFIDENTIAL E-COMMERCE  
CLIENT

---

MECHANICAL, ELECTRICAL,  
PLUMBING, FIRE PROTECTION

---

### **Fife, WA**

16,000± SF single-story shell warehouse with 193,364± SF robotic sorting mezzanine, and 17,300± SF office space

### **Platte, MO**

112,000 SF shell warehouse space with a main office, maintenance, and various additional cages, shipping/receiving, and remote break and toilet facilities

### **Seattle, WA**

Renovated an existing three-level warehouse building



## **DISTRIBUTION CENTERS**

MULTIPLE LOCATIONS, U.S.

---

CONFIDENTIAL E-COMMERCE  
CLIENT

---

MECHANICAL, ELECTRICAL,  
PLUMBING, FIRE PROTECTION

---

Ground up spec warehouses for package delivery services. Warehouses varied in size from 40,000 SF to 500,000 SF and included supporting office and breakroom areas. Warehouses were single-story tilt-up construction.

---

- Camarillo, CA
- Durham, NC
- Etna, OH
- Kernersville, NC
- Melbourne, FL
- Toledo, OH
- Township, NJ





## **DERMODY PROPERTIES - BUILDINGS 1-5**

KENT, WA

---

<b>113,979 SF</b>	BUILDING 1
<b>111,062 SF</b>	BUILDING 2
<b>206,080 SF</b>	BUILDING 3
<b>109,495 SF</b>	BUILDING 4
<b>231,266 SF</b>	BUILDING 5
<b>771,882 SF</b>	TOTAL

---

LEED® GAP ANALYSIS



## PROJECT APOLLO

GREER, SC

BECKNELL INDUSTRIAL, INC.

**666,711** SF (PHASE 1)  
**244,860** SF (PHASE 1A)

WAREHOUSE  
OFFICE  
GUARDHOUSE

MECHANICAL, ELECTRICAL,  
PLUMBING, FIRE PROTECTION



## 6215+6255 FULTON ROAD TORNADO DAMAGED BUILDINGS

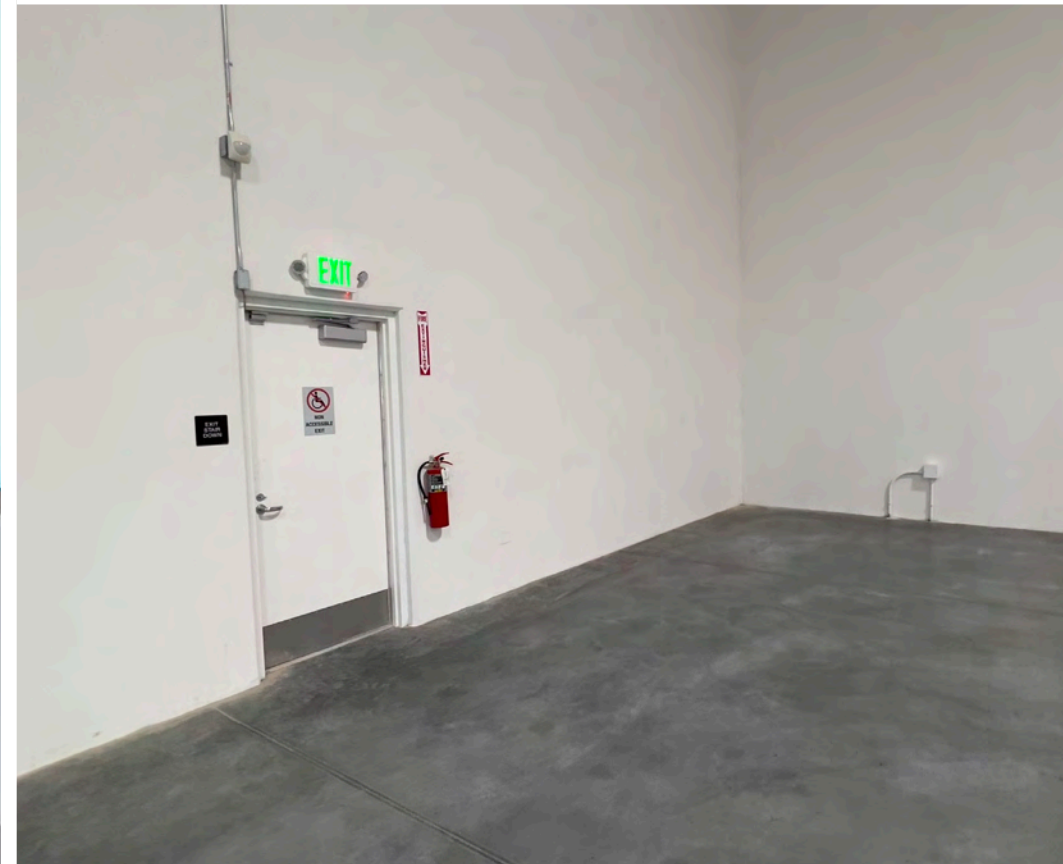
FULTON COUNTY, GA

---

2 BUILDINGS+WAREHOUSES

---

MECHANICAL, ELECTRICAL,  
PLUMBING, FIRE PROTECTION



## **GOPUFF DISTRIBUTION CENTER**

RICHMOND, CA

---

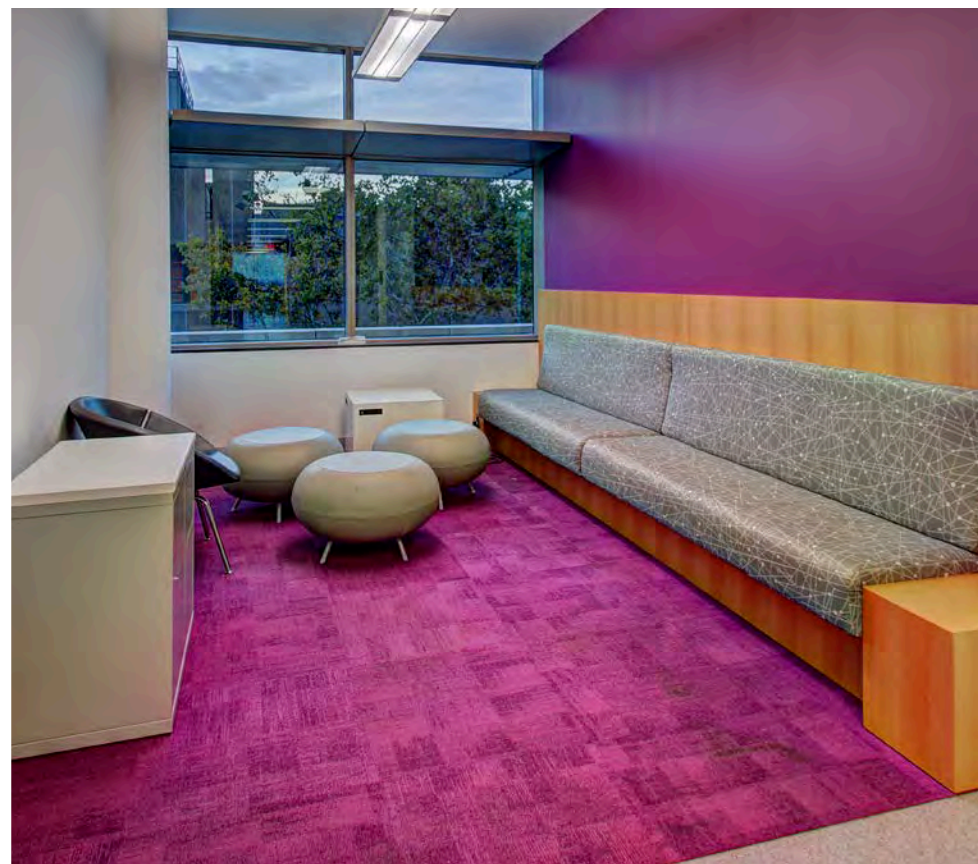
**203,300** SQUARE FEET

---

FEASIBILITY STUDY

---

This state-of-the-art warehouse facility is a tenant finish out of 124,000 SF of distribution center including approximately 45,000 SF of conditioned warehouse space that includes storage of wine and other food and beverage-based products.



## SCIENCE AND EDUCATION RESEARCH CENTER

PHILADELPHIA, PA

TEMPLE UNIVERSITY

**258,000** SQUARE FEET

MECHANICAL, ELECTRICAL, PLUMBING, TELECOMMUNICATIONS, SECURITY, LIGHTING DESIGN, COMMISSIONING

**LEED GOLD CERTIFIED**



## **BEN FRANKLIN TECH VENTURES**

BETHLEHEM, PA

---

BEN FRANKLIN TECHNOLOGY PARTNERSHIP

---

**47,000** SQUARE FEET

---

MECHANICAL, ELECTRICAL, PLUMBING, FIRE PROTECTION, TELECOMMUNICATIONS, SECURITY

---

**LEED GOLD CERTIFIED**



## **3675 MARKET STREET**

PHILADELPHIA, PA

---

WEXFORD SCIENCE + TECHNOLOGY

---

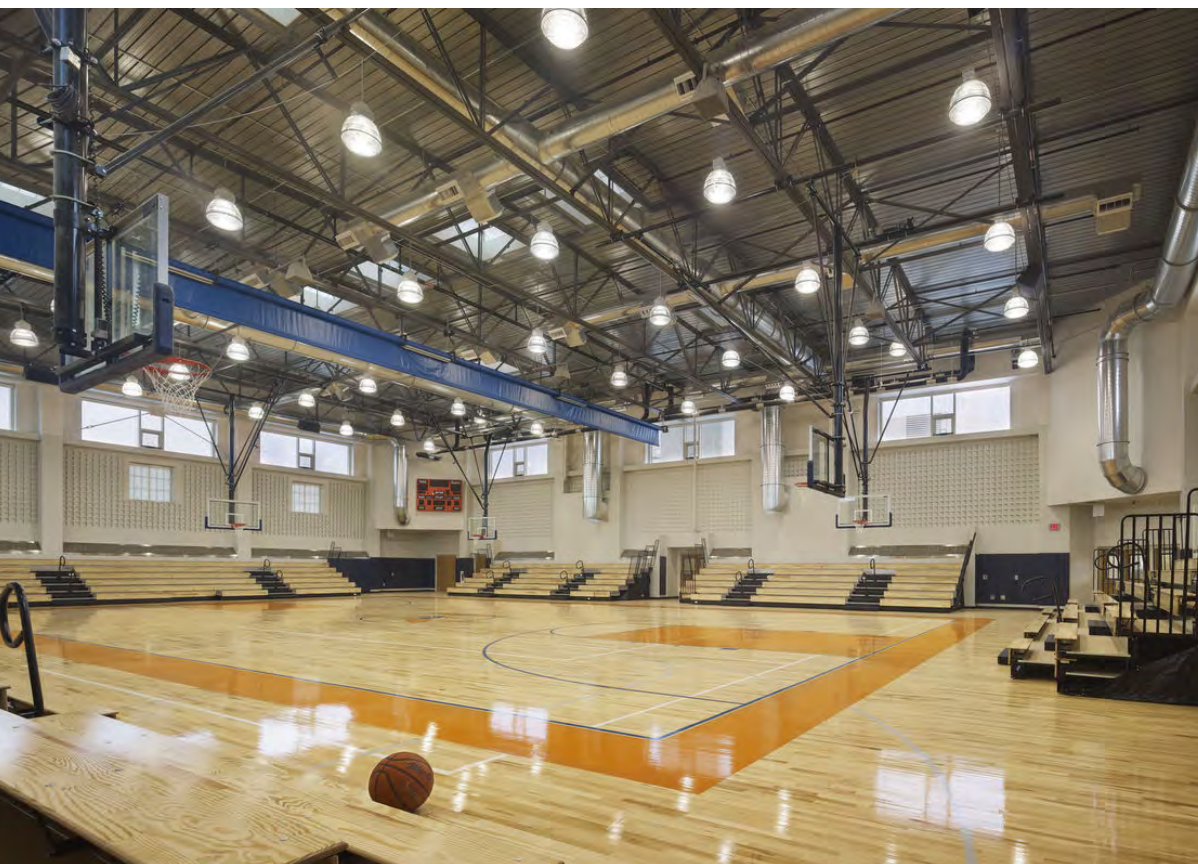
**363,000** SQUARE FEET

---

MECHANICAL, ELECTRICAL,  
PLUMBING, FIRE PROTECTION

---

**LEED GOLD CERTIFIED**



## WEST PHILADELPHIA HIGH SCHOOL

PHILADELPHIA, PA

---

SCHOOL DISTRICT OF PHILADELPHIA

---

**165,306** SQUARE FEET

---

MECHANICAL, ELECTRICAL,  
PLUMBING, FIRE PROTECTION,  
TELECOMMUNICATIONS, SECURITY,  
COMMISSIONING

---

**LEED GOLD CERTIFIED**





## PENNSYLVANIA EMERGENCY MANAGEMENT AGENCY

SUSQUEHANNA TOWNSHIP, PA

---

PENNSYLVANIA DEPT. OF GENERAL  
SERVICES

---

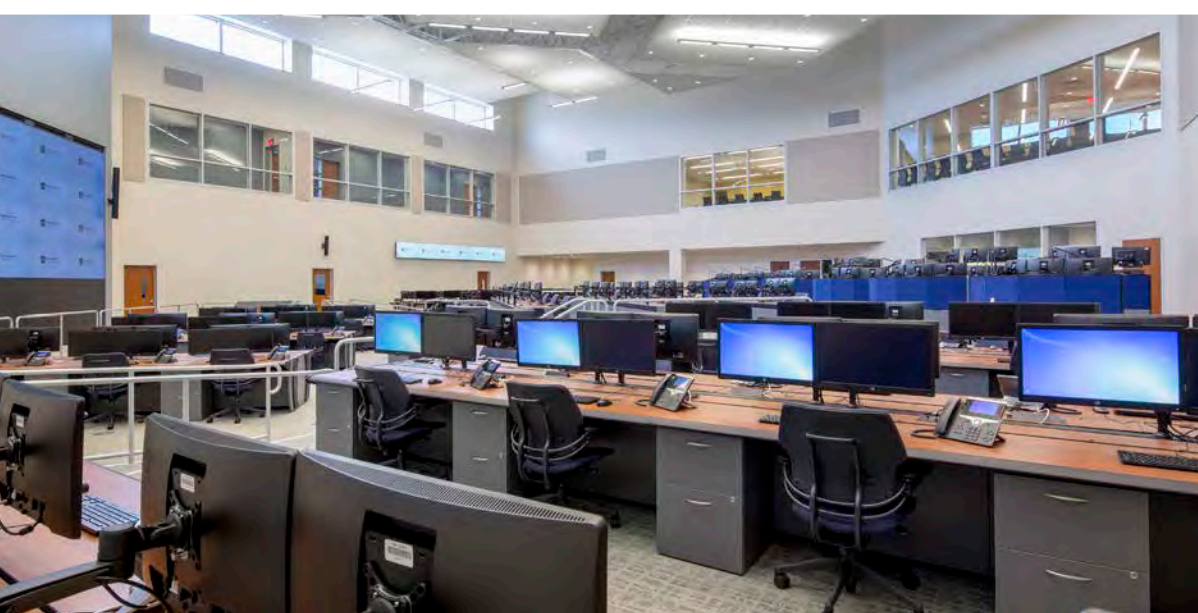
**122,000** SQUARE FEET

---

MECHANICAL, ELECTRICAL,  
PLUMBING, FIRE PROTECTION,  
LIGHTING DESIGN

---

**LEED SILVER CERTIFIED**





## **BRAMBLETON PUBLIC SAFETY CENTER**

BRAMBLETON, VA

---

LOUDON COUNTY, VA

---

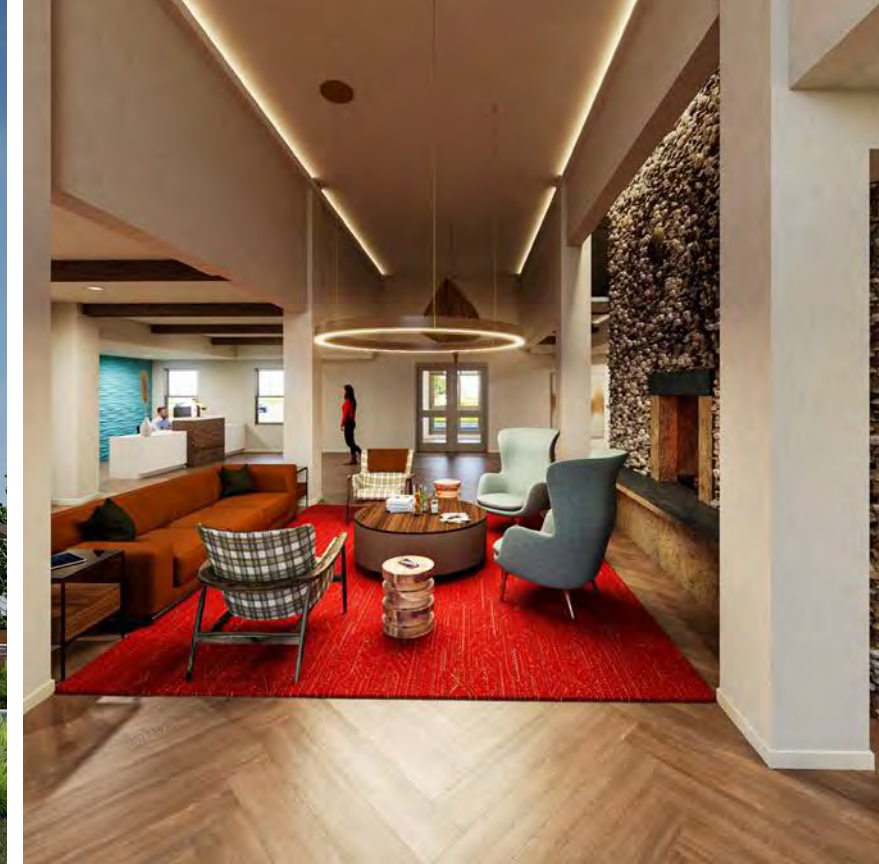
**27,000** SQUARE FEET

---

COMMISSIONING

---

**LEED SILVER CERTIFIED**



## REGIONAL JUVENILE TREATMENT FACILITY

WAUSAU, WI

---

GREAT LAKES INTER-TRIBAL COUNCIL

---

**28,000** SQUARE FEET

---

MECHANICAL, ELECTRICAL,  
PLUMBING, FIRE PROTECTION,  
SECURITY





# CURRENTLY IN DESIGN

## COMMUNITY HEALTH CLINIC & PHARMACY

LINCOLN CITY, OR

---

CONFEDERATED TRIBES OF SILETZ  
INDIANS

---

2 BUILDINGS  
5,000 SF HEALTHCARE  
3,000 SF PHARMACY

---

MECHANICAL, ELECTRICAL,  
PLUMBING



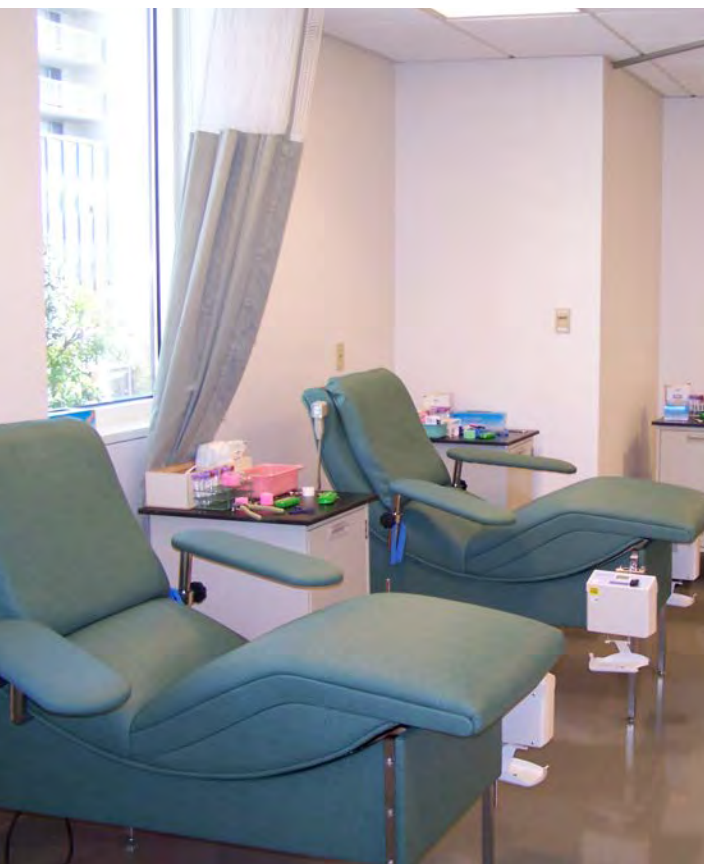
**ENERGY ASSESSMENT + IMPROVEMENT PLAN**  
PRIOR LAKE, MN

SHAKOPEE MDEWAKANTON SIOUX COMMUNITY

2.2M SQUARE FEET, 19 BUILDINGS

MECHANICAL, ELECTRICAL, PLUMBING, ENERGY MODELING, ENERGY AUDITS, SPECIALTY LIGHTING

**NET ZERO ENERGY**



## ALEX GRASS MEDICAL SCIENCES BUILDING

PHILADELPHIA, PA

PINNACLE HEALTH SYSTEM  
HARRISBURG HOSPITAL

**35,000** SQUARE FEET

MECHANICAL, ELECTRICAL,  
PLUMBING, SECURITY, LIGHTING  
DESIGN



## **MEDICAL SCIENCES PAVILION**

HARRISBURG, PA

---

PINNACLE HEALTH SYSTEM

---

**60,000** SQUARE FEET

---

MECHANICAL, ELECTRICAL, FIRE  
PROTECTION, LIGHTING DESIGN



## MILTON HERSHEY MEDICAL CENTER

HERSHEY, PA

---

PENNSYLVANIA STATE UNIVERSITY  
MILTON HERSHEY MEDICAL CENTER

---

**220,000** SF CHILDREN'S CENTER  
**180,000** SF CANCER INSTITUTE  
**158,000** SF ACADEMIC SUPPORT  
BUILDING

---

MECHANICAL, ELECTRICAL,  
PLUMBING, FIRE PROTECTION





## **SOUTHEASTERN VETERANS CENTER**

EAST VINCENT TOWNSHIP, PA

---

PENNSYLVANIA DEPARTMENT OF  
GENERAL SERVICES

---

**140,000** SQUARE FEET

---

MECHANICAL, ELECTRICAL,  
PLUMBING, FIRE PROTECTION,  
TELECOMMUNICATIONS, SECURITY



**JASON BOOTH**

PRESIDENT

615.335.2604

[Jason.Booth@windwardec.com](mailto:Jason.Booth@windwardec.com)

**WINDWARD**  
[windwardec.com](http://windwardec.com)